



AUBURN
UNIVERSITY

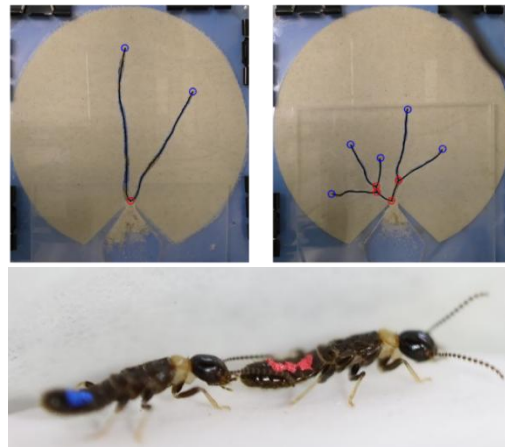
College of Agriculture

Graduate student in Mizumoto Lab at Auburn University
Termite behavior, social evolution, collective behavior, tracking

The Mizumoto Lab is recruiting one graduate student (either PhD or master's level). The student is expected to develop a research question on the diversity/evolution of termite social/collective behavior in a phylogenetic framework. Research topics include, e.g., image analysis of tunneling behavior, movement tracking of tandem running behavior, developing a mathematical model of social evolution, and social parasitism interactions. We study diverse termite species across local, national, and international ranges, but particular focus can be on *Reticulitermes* spp in the Southeastern US region, compared with species in other regions. This research involves fieldwork, behavioral observations, video tracking, computational data analysis, and simulation modeling. Graduate students are fully funded through research assistantships and will conduct research under the guidance of Dr. Nobuaki Mizumoto. Students are expected to present their research at national and international conferences, publish papers in international peer-reviewed journals, and actively participate in laboratory and departmental events.

For consideration, please send the following materials to nzm0095@auburn.edu

1. CV listing relevant coursework, skills, and research experience
2. Cover letter (1-2 page) addressing research interests and research experience, mentioning at least one paper from the [lab website](#).
3. Transcript
4. Contact information of three references (letters will be required during the formal application process)



The position starts in January 2026. Review of materials starts immediately and continues until the position is filled. Selected applicants will be interviewed over Zoom.

Auburn University is an R1 research university located in a beautiful college town, offering many opportunities for nature-related activities. The Mizumoto Lab is part of the Department of Entomology & Plant Pathology, known for its friendly environment and rich tradition. Auburn hosts several labs studying social insects (ants, bees, termites), providing excellent opportunities to develop future research networks.

Auburn University is committed to an inclusive and diverse campus environment. Traditionally underrepresented groups are encouraged to apply.

Contact

Nobuaki Mizumoto, Assistant Professor
Department of Entomology & Plant Pathology
Auburn University, Auburn, AL, US
E-mail: nzm0095@auburn.edu
Website: mizumoto-lab.com/

